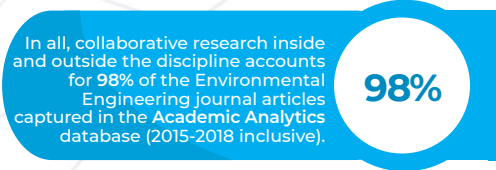
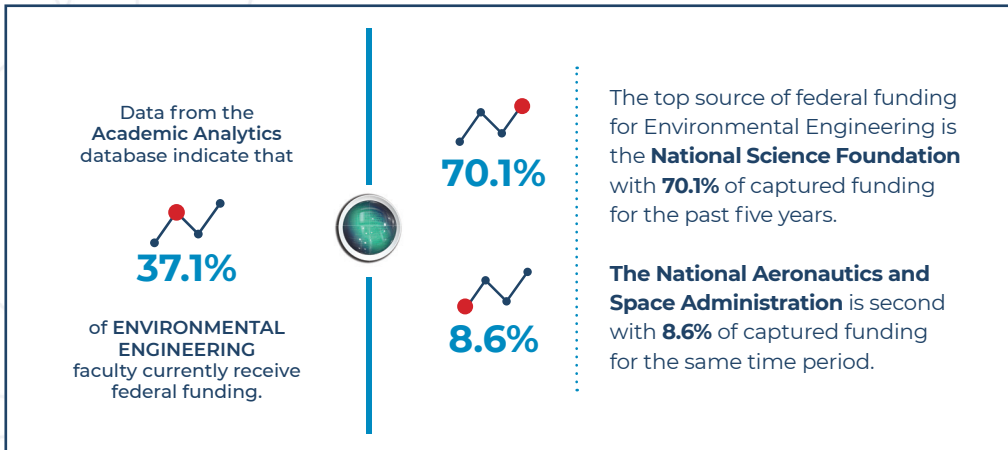


DISCIPLINE FastFacts

from Academic Analytics



Collaborations with other disciplines most often involves researchers in Civil Engineering where they account for **8.7%** of all co-authored journal publications. The next frequent collaborative field, Geology/Earth Science accounts for **6.3%** of the total co-authored journal publications for **ENVIRONMENTAL ENGINEERING**. Do you know who are the top potential collaborators in these fields that best complement your research and where they are located?



Since **Academic Analytics** uses the individual researcher as the unit of record, we can look across all faculty in a discipline to view their current rank and the years since their most advanced degree.

FULL professor	ASSOCIATE professor	ASSISTANT professor
30 YEARS	18.6 YEARS	8.1 YEARS

Average academic ages (years since their most advanced degree) of Environmental Engineers nationally

FULL professor	ASSOCIATE professor	ASSISTANT professor
50.5%	24%	25.5%

Percent of faculty ranks within the national discipline

How does the distribution of faculty in your department compare to the national averages, and what are the implications for planning?

Research Insight from Academic Analytics can help answer that.

There are **3,623** individuals in the **Academic Analytics** database who are affiliated with Environmental Engineering departments.

Of the faculty population for whom we can infer gender

76.2%	23.8%
MALE	FEMALE

According to the data captured in the **Academic Analytics** database, **38.3%** of Environmental Engineering faculty have received a national honorific award. The American Society of Civil Engineers provides the most honorific awards for the discipline, accounting for **22.3%** of all tracked awards. Of the faculty population for whom we have been able to identify gender, the distribution of awards granted by the American Society of Civil Engineers is **91.4%** of awards going to male scholars and **8.6%** going to female scholars.